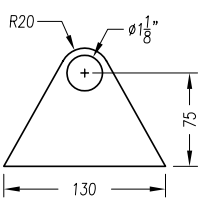
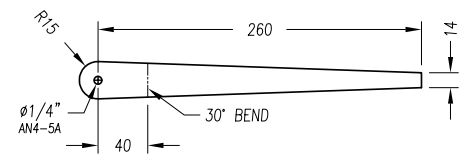


1 SEAT PANEL
t=.025" (1 REQ'D)

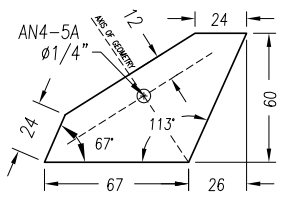


2 REAR BEARING ASSEMBLY
t=.063 (1 REQ'D)

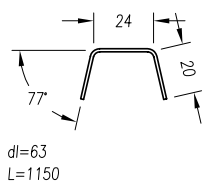


3 SEATBELT ATTACHMENT
t=.040" (2 REQ'D)
30X275

NOTE: 6V12-8, 1/8" CLEARANCE ON BOTH SIDES, CUTOUT FOR THE SEAT BELT BOLT



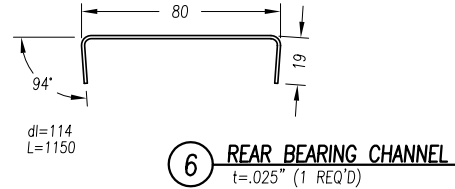
4 SEATBELT ATTACHMENT DOUBLER PLATE
t=.040" (2 REQ'D)



5 SEAT BACK CHANNEL
t=.025" (1 REQ'D)

8 SEAT BOTTOM 520x360
t=.016" (2 REQ'D)

7 BENT STRIP
t=.025" 25mm WIDE (1 REQ'D)



6 REAR BEARING CHANNEL
t=.025" (1 REQ'D)

ZODIAC
CH 601 HD

SEAT INSTALLATION & RIVETING
REAR BEARING MOUNT

copyright ©2001 Zenith Aircraft Co. zenithair.com 4th 05/01

6-V-12