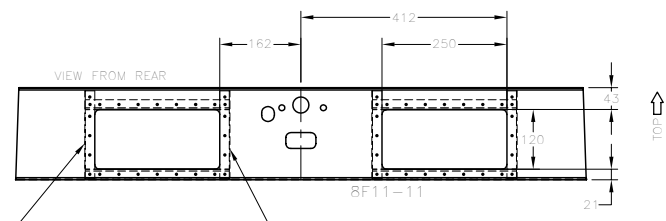
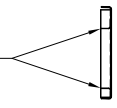


OPTIONAL CUTOUT IN REAR CHANNEL 8F11-11 TO PROVIDE ADDITIONAL LEG ROOM FOR REAR PASSENGER SEATS.

TOP AND BOTTOM L ANLGES HAVE THE FLANGE TOWARDS THE CUTOUT. THE ENDS OF TEH HORIZONTAL L ANGLES OVERLAP THE VERTICAL ANGLES AT EACH END OF THE OPENING.



L ANGLE RIVETED TO THE SIDE OF THE FRONT SEAT O/B STIFFENER 8F16-5. THE EDGE OF THE CUTOUT IS EVEN WITH THE INBOARD EDGE OF THE FLANGE.

L ANGLE WITH THE VERTICAL FLANGE ON THE INBOARD SIDE (MIRROR IMAGE TO THE OUTBOARD L ANGLE). TO TOP AND BOTTOM L ANGLES WILL OVERLAP THE FLANGE RIVETED TO REAR CHANNEL 8F11-11. PLAN FOR A RIVET IN THE MIDDLE OF THE OVERLAP. A5 PICH 30

THE FOLLOWING IS NOT SHOWN:
BRAKE LINE LOCATIONS
BATTERY CABLE LOCATIONS
MISC WIRES LOCATIONS

STOL CH 801	ORIGINAL INFO MJM 04/24/02 REVISION INFO MJM 08/01/02	DESCRIPTION FUSELAGE: FORWARD BEFORE JOINING THE FUSELAGE	ASSY NO. 8FF-2
	COPYRIGHT © 2002 ZENITH AIRCRAFT CO. WWW.ZENITHAIR.COM		