

STOL CH 801

LYCOMING O-360 Engine Installation

SECTION 5b Throttle Control



Throttle control is the Black knob with lock ring.

Pulled out for idle.

Note: photo from 640, which uses a yoke instead of the stick between the seats.
Suggested location for the throttle is on the left side of the panel.



Friction Lock Control
10-32 threaded end
Length=5ft
P/N **05-08660**

Qty=1

Remove the nut and insert the cable through a hole in the Instrument panel, then through the firewall.



Hole in firewall in line with
the support bracket
360-SBC and the throttle.

Wait to drill hole in the firewall until after the Throttle Support Bracket 360-SBC is bolted to the oil pan, the hole in the firewall is located for straight alignment of the throttle cable.



Cable routing

Wait to drill the hole in the firewall until after the support bracket is drilled and positioned.

3 point in line: hole in firewall, slot in the support bracket and the forked end over the throttle lever.



Cable routing under oil pan

The support bracket bolted to the end supports throttle cable. No contact with the engine mount.



FORK CLEVIS
10-32 female threads
P/N 1-942-000

CLEVIS PIN
MS20392-2C17

WASHER
AN960-1032

COTTER PIN
AN380-2-2

QTY=1



Slide the Fork over the throttle lever secured with the clevis pin.

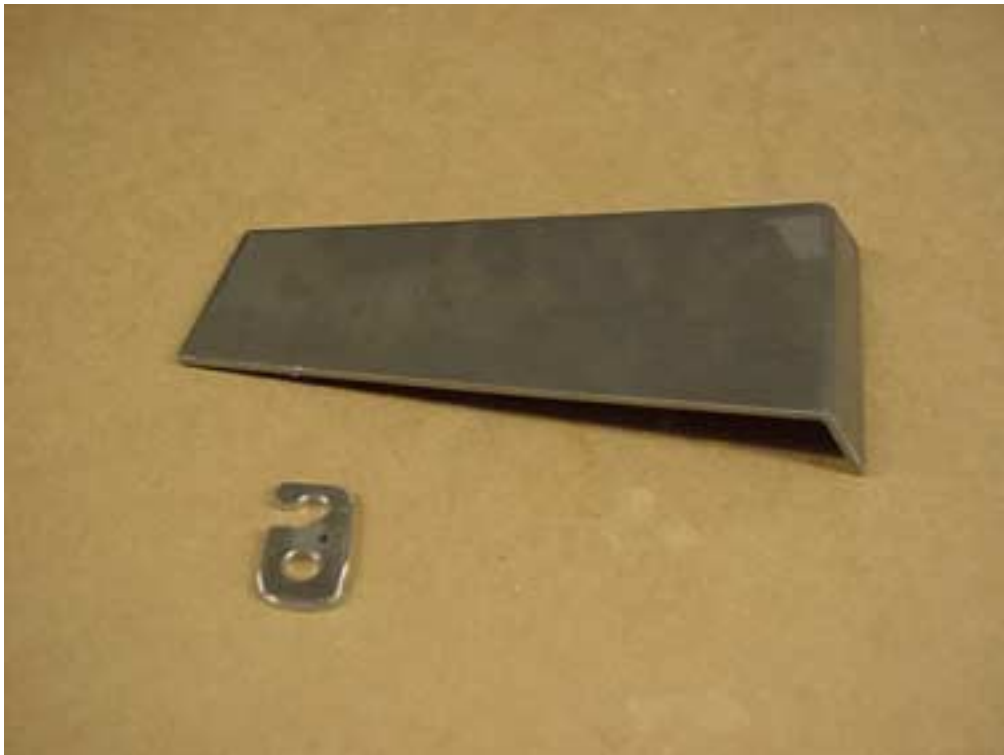
Rotate the throttle lever to the idle position. Sight back to see where to drill the hole in the support bracket; the cable should not come in contact with the oil pan.



SAMPLE BRACKET (this is not the part supplied) TO SHOW THE SLOT AND THE HOLE FOR THE THROTTLE CABLE.

The 2 holes at the top are the mounting holes to screw the bracket to the oil pan.

Slot shown on the outboard side of the bracket.



Throttle support bracket
8-BC
SLOT AND BOLT

Supplied bracket, the holes are not drilled

Supplied Clip: the slot and holes are drilled.

IMPORTANT: CUT THE SLOT ON THE INBOARD SIDE OF THE BRACKET IN LINE WITH THE THROTTLE LEVER.



Location of the throttle bracket:

The bend is at 90 degrees to the crank shaft (parallel to the carburetor).

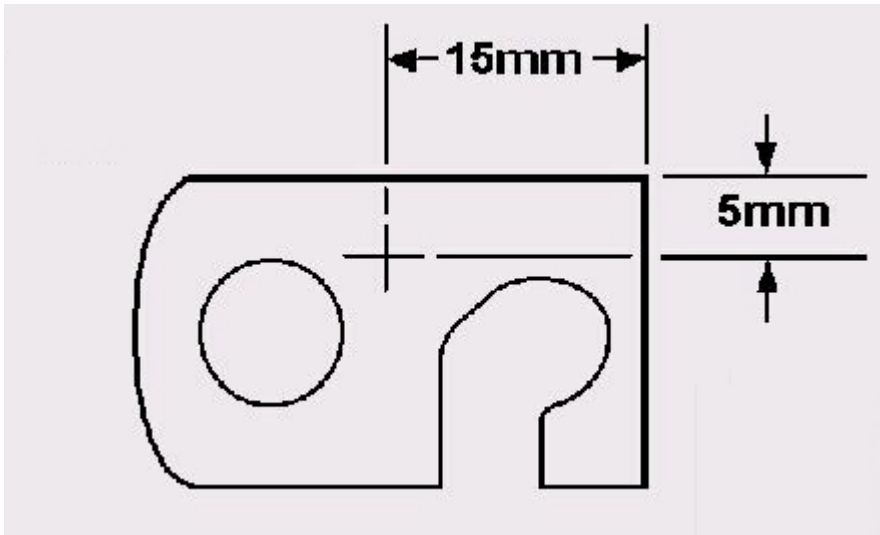
Right side, remove the two rear bolts for the oil pan to install the support bracket.



Location of the Throttle support bracket bolted to the oil pan.

SUGGESTION
LOCATION OF THE SLOT IS ON THE INBOARD SIDE OF THE BRACKET, in this photo it is shown on the outboard (see alternative routing)

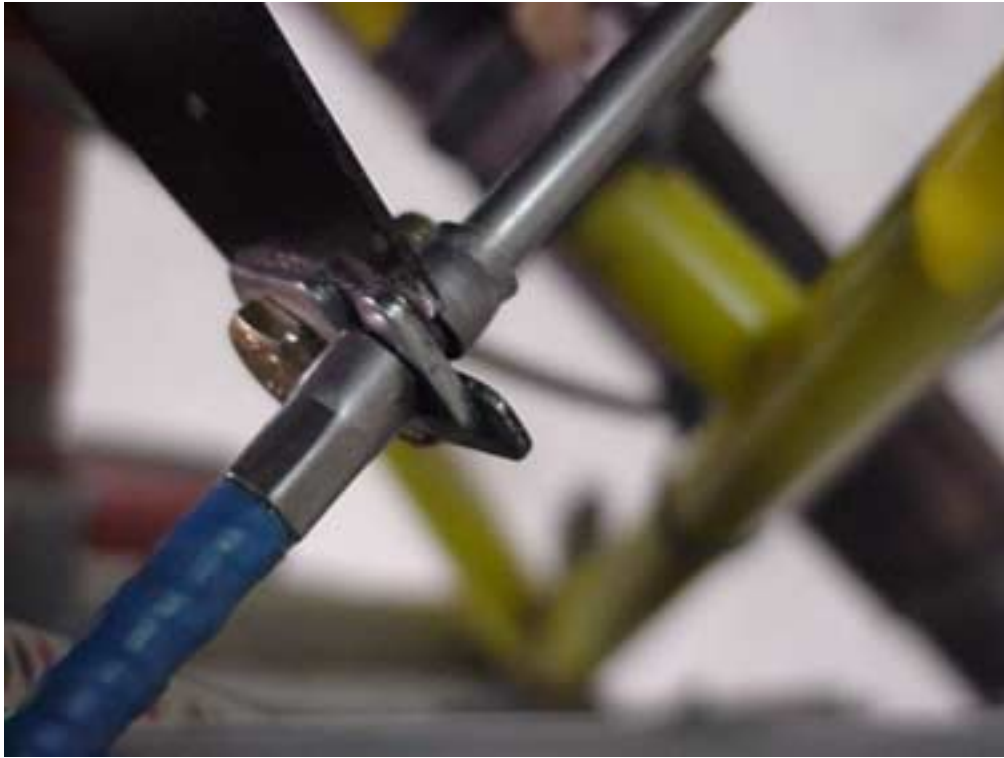
IMPORTANT: DRILL THE HOLE FOR THE THROTTLE CABLE IN LINE WITH THE THROTTLE LEVER Fork Clevis 10-32 female threads P/N 1-942-000



Location of hole for the cotter pin in the Retainer clip



Center punch the hole in then drill with a 1/16" drill bit.



AN4-5A bolt with Nylon
Self Locking Nut

AN380-2-2
Cotter Pin

Qty = 1



Firewall putty for cables
through the firewall.

(ITEM NOT SUPPLIED IN
KIT)

ALTERNATIVE ROUTING



Alternative routing, THE hole through firewall for the throttle cable is located above the upper nose gear bearing.



Alternative routing, hole in the firewall is not in line with the support bracket and the throttle lever.

Bend in the cable.



BOLT WITH DRILL SHANK, CASTLE NUT & COTTER PIN AN3-12

FORKED END AN665-21R

SHORT BUSHING 20M34-7

OFFSET BUSHING 20M35-8

(4130N ROUND SEAMLESS TUBE, 1/4" OD X .028" WALL)

Alternative installation



FORK INSTALLED ON THE OUTBOARD SIDE OF THE THROTTLE LEVER.

Viewed from the front: NOTICE THAT THE HOLE IN THE SUPPORT BRACKET FOR THE THROTTLE CABLE IS IN LINE WITH THE FORKED END BOLTED TO THE THROTTLE LEVER ON THE CARB.

*****THROTTLE CONTROL***
SECTION 5b**

| P/N | DESCRIPTION | QTY |
|--------------|---|------------|
| 05-08660 | THROTTLE CABLE 5 FT FRICTION LOCK CONTROL | 1 |
| 1-942-000 | END CLEVIS, 10-32 FEMALE THREAD (fork end) | 1 |
| MS20392-2C17 | 3/16" CLEVIS PIN (length = 17/32") (for 1-942-000 and throttle lever control on carb) | 1 |
| AN380-2-2 | 1/16" COTTER PIN (360-SBC & Clevis pin) | 2 |
| AN960-10 | 3/16" WASHER (for clevis pin) | 1 |
| 360-SBC | SUPPORT BRACKET AND CLIP (steel bent bracket) | 1 |
| AN4-5A | BOLT, SL NUT, WASHER (for 360-SBC clip to bracket) | 1 |