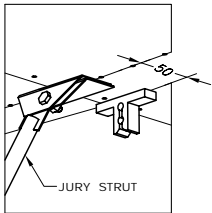
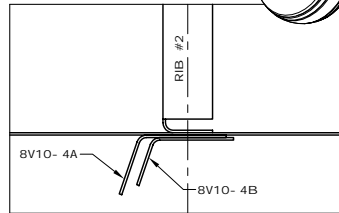


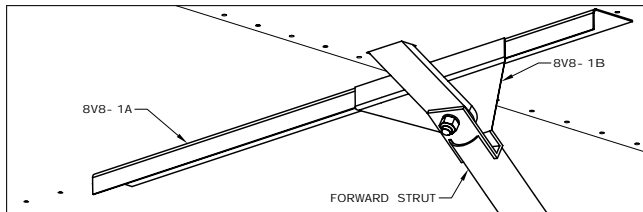
REAR WING STRUT ATTACHMENT
AN5-7A (2 WASHERS & SL NUT)



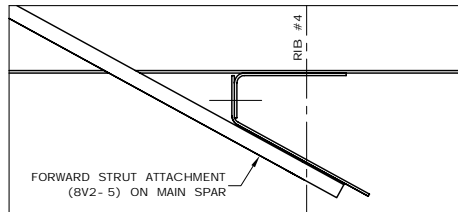
JURY STRUT ATTACHMENT
AND DOOR CLASP LOCATION
AN3-5A (WASHER & SL NUT)



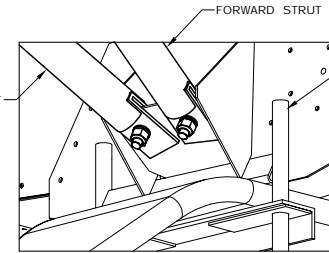
JURY STRUT ATTACHMENT ASSEMBLY



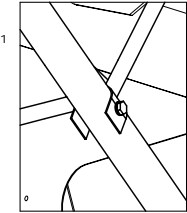
FORWARD WING STRUT ATTACHMENT
AN5-16A (WASHER & SL NUT)



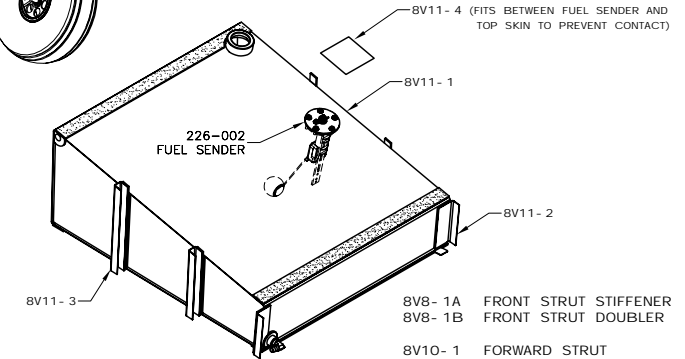
FORWARD WING STRUT ATTACHMENT ASSEMBLY



GEAR STRUT ATTACHMENT
2 BOLTS AN5-7A (2 WASHERS & SL NUT)



GEAR STRUTS TO STRUTS
2 BOLTS AN3-16A (2 WASHERS & SL NUT)



8V8-1A FRONT STRUT STIFFENER
8V8-1B FRONT STRUT DOUBLER

8V10-1 FORWARD STRUT
8V10-2A REAR STRUT PASSENGER SIDE
8V10-2B REAR STRUT PILOT SIDE
8V10-3 JURY STRUTS
8V10-4A JURY STRUTS ANGLE
8V10-4B JURY STRUTS ANGLE

8V11-1 WING TANK
8V11-2 WING TANK ANGLE
8V11-3 WING TANK 'U' CHANNEL
8V11-4 NYLON PAD

STOL
CH 801

ORIGINAL INFO
M/J/M 01/02/02
REVISION INFO

DESCRIPTION
WING EXPLODED VIEW
WING AND JURY STRUTS / WING TANK

ASSY NO.

8XW-2

COPYRIGHT © 2002 ZENITH AIRCRAFT CO. WWW.ZENITHAIR.COM