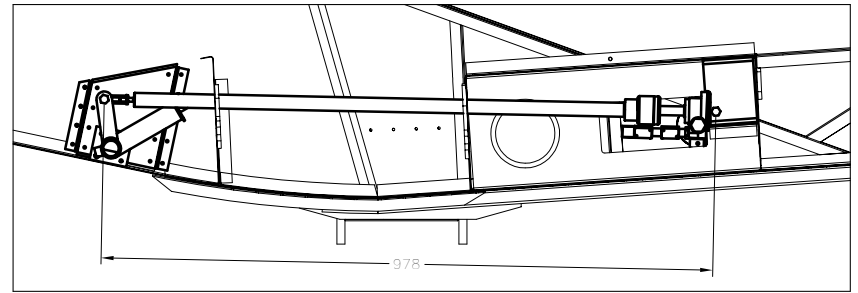
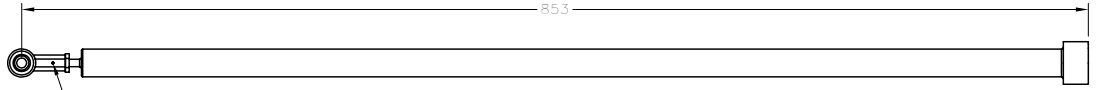


TORQUE TUBE INSTALLATION

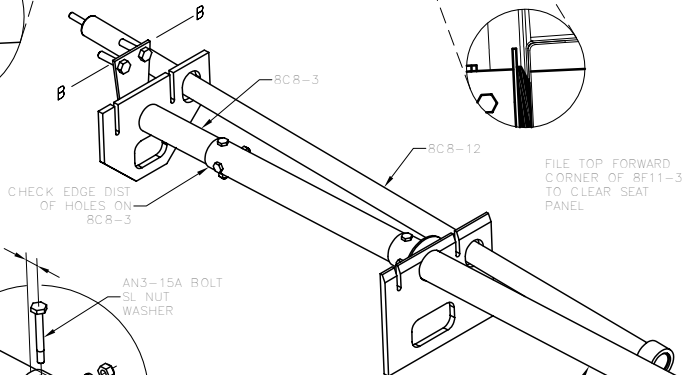
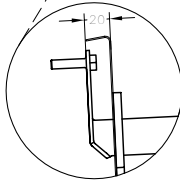


FLAP ACTUATOR INSTALLATION



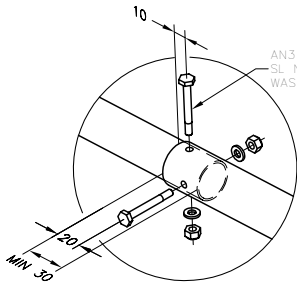
CHECK THAT THERE IS THREADS THROUGH THE INSPECTION HOLE

FLAP ACTUATOR ROD 8C8-12  
ROD END TO END LENGTH

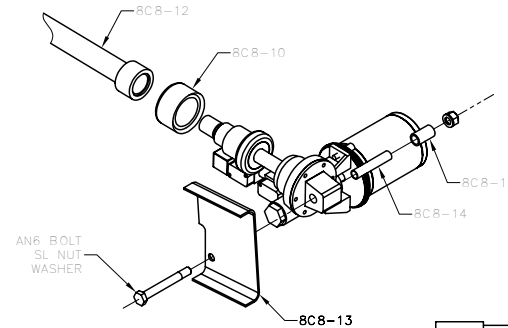


CHECK EDGE DIST OF HOLES ON 8C8-3

FILE TOP FORWARD CORNER OF 8F11-3 TO CLEAR SEAT PANEL



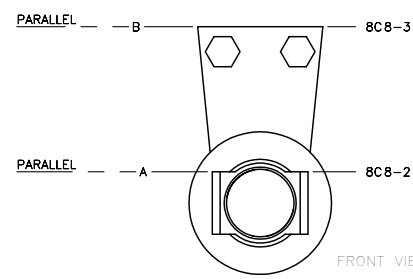
AN3-15A BOLT  
SL NUT  
WASHER



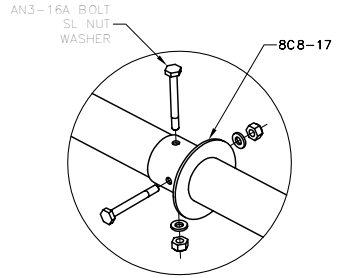
(NOTE: THIS DRAWING IS FLIPPED OVER FROM THE PHOTO IN THE MANUAL)

AN6 BOLT  
SL NUT  
WASHER

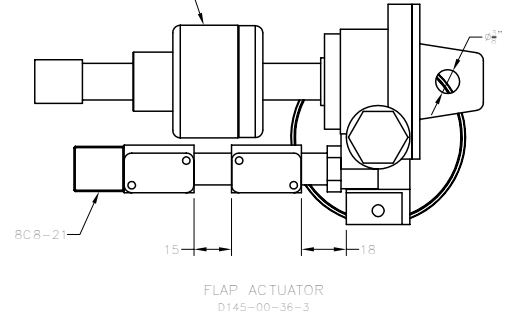
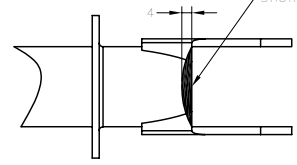
8C8-10  
PRESS FIT



FRONT VIEW ALIGNMENT



FILE THE FRONT EDGE OF 8C8-2 TO ALLOW FOR CLEARANCE OF THE CONTROL STICK



FLAP ACTUATOR  
D145-00-36-3

STOL CH 801	ORIGINAL INFO MJM 06/07/02 REVISION INFO	DESCRIPTION	ASSY NO.
		FORWARD CONTROLS: INSTALLING THE FORWARD TUBES	8CF-2
		COPYRIGHT © 2002 ZENITH AIRCRAFT CO. WWW.ZENITHAIR.COM	