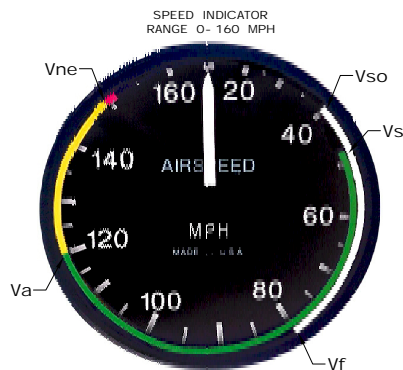
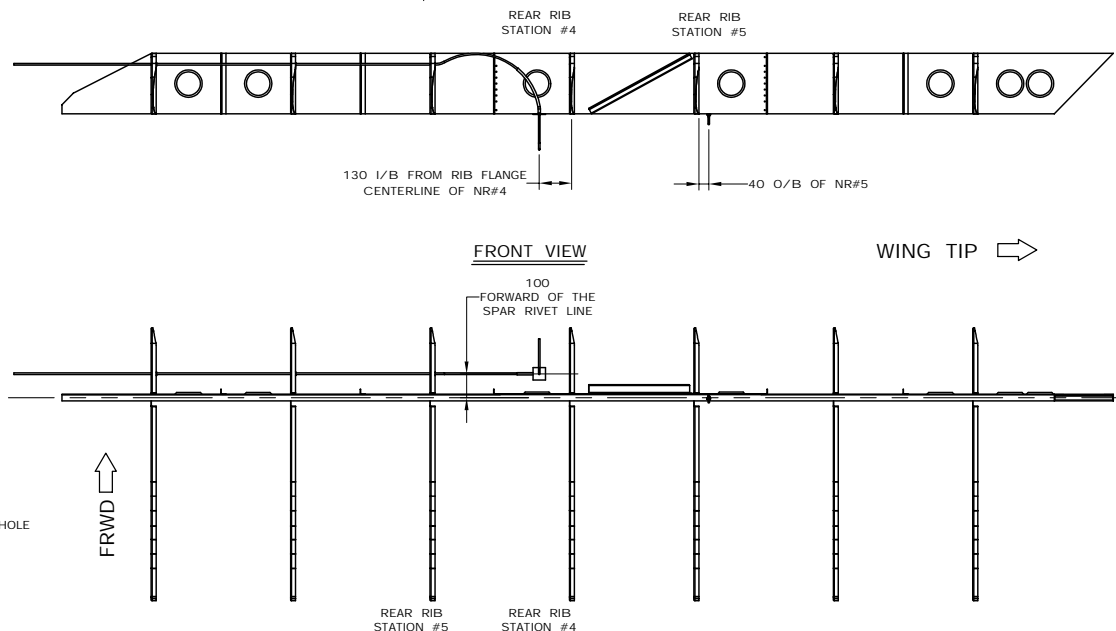
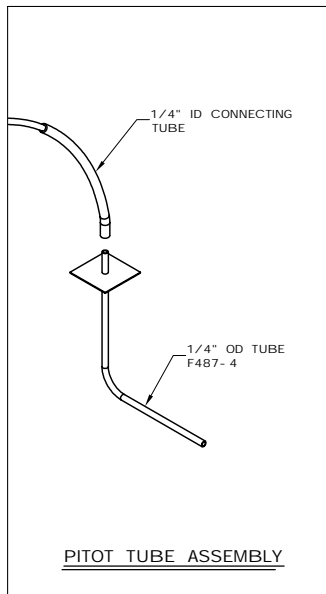
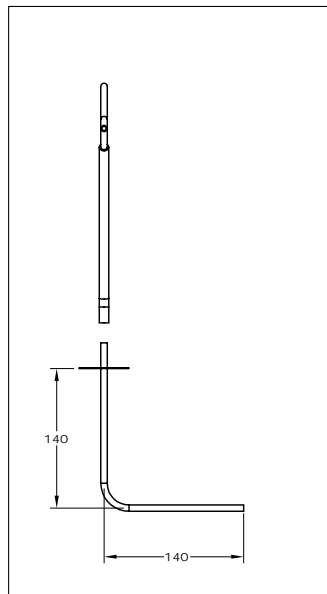


ROUTE THE POLYLIN TUBE THROUGH GROMMETS IN THE NOSE RIB



**AIRSPEED MARKINGS**

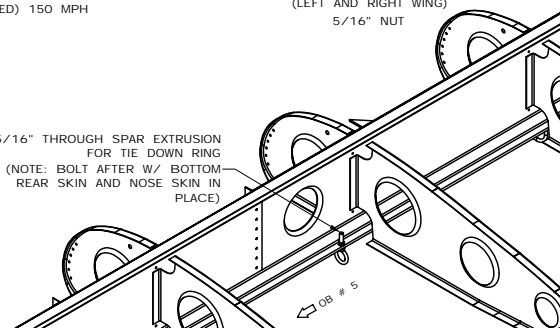
WHITE ARC (FLAPS EXTENDED) 40-80 MPH  
 GREEN ARC (UTILITY CATEGORY) 48-120 MPH  
 YELLOW ARC (CAUTION RANGE) 120-149 MPH  
 RED LINE (NEVER EXCEED SPEED) 150 MPH

**OPERATING LIMITS**  
 (GROSS WEIGHT 2150 lbs)

- Vso = 40MPH FLAP STALL SPEED
- Vs = 48MPH STALL SPEED
- Vf = 80MPH MAX FLAP SPEED
- Va = 120MPH MANEUVERING SPEED
- Vne = 150MPH NEVER EXCEED SPEED



5/16" THROUGH SPAR EXTRUSION FOR TIE DOWN RING  
 (NOTE: BOLT AFTER W/ BOTTOM REAR SKIN AND NOSE SKIN IN PLACE)



STOL CH 801	ORIGINAL INFO MJM 06/29/01 REVISION INFO	DESCRIPTION PITOT TUBE, TIE DOWN RING, AIRSPEED MARKINGS	ASSY NO. <b>8ZV-1</b>
	COPYRIGHT © 2000 ZENITH AIRCRAFT CO. WWW.ZENITHAIR.COM		